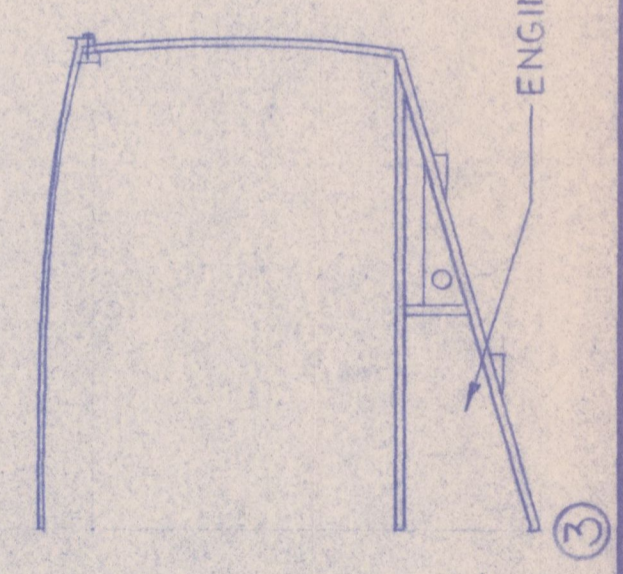
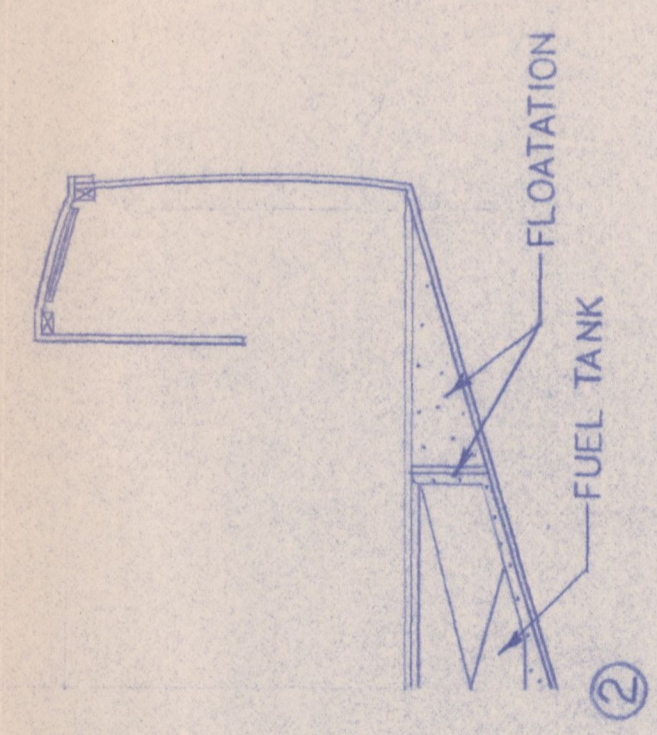
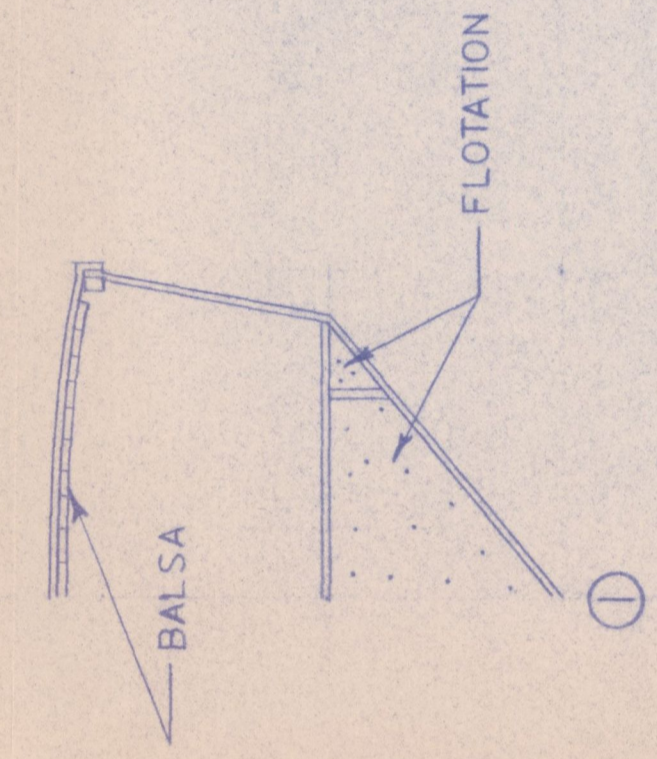
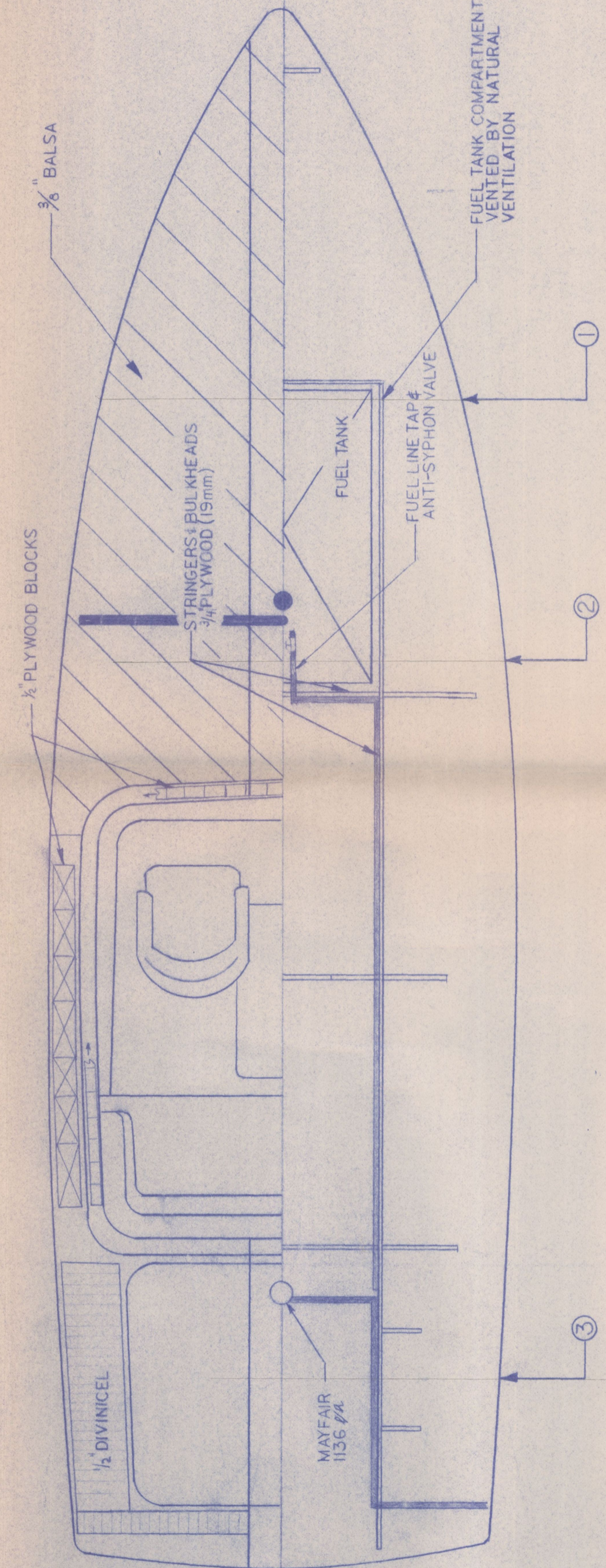
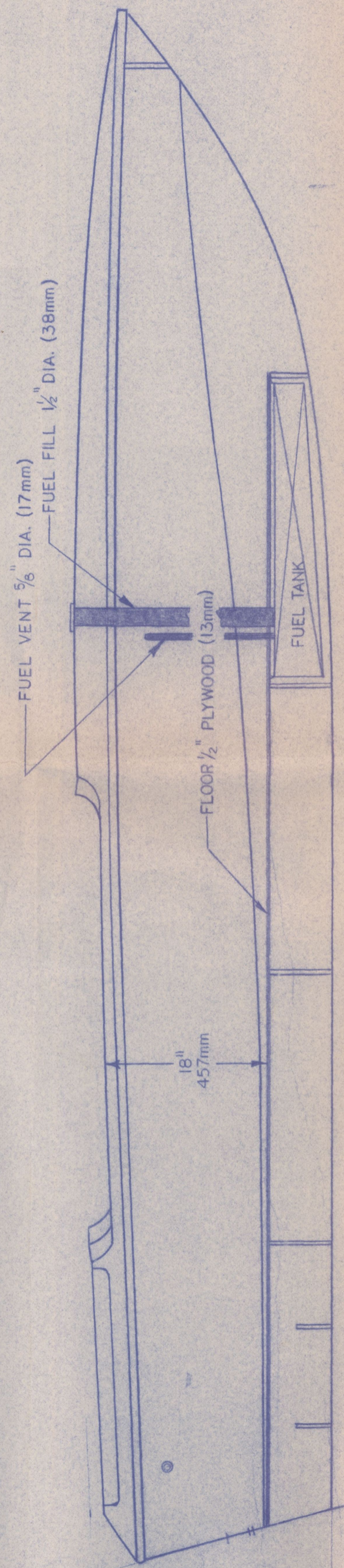
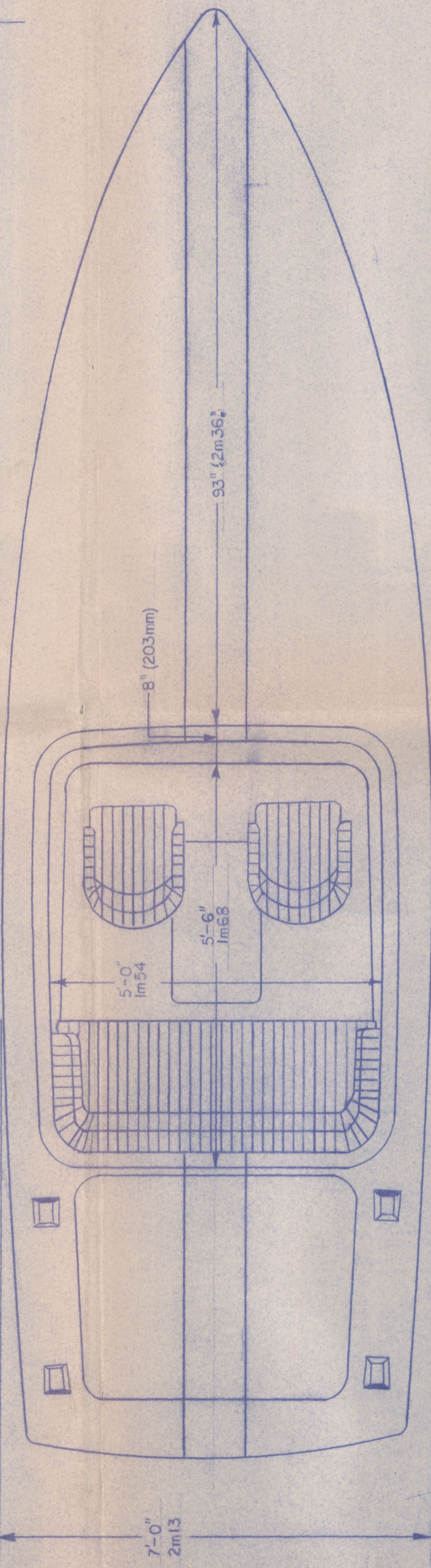
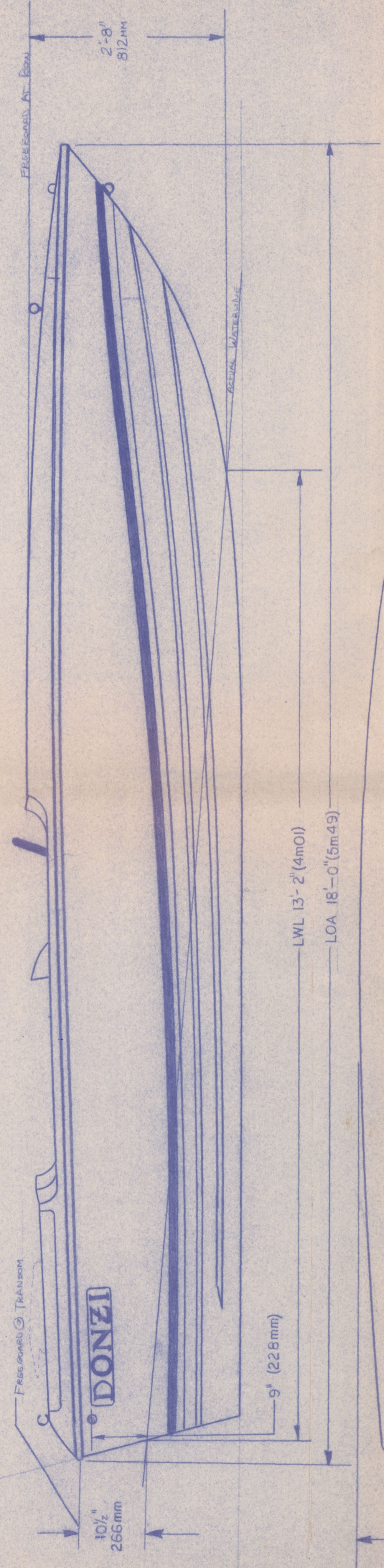


REV.	ECN	DESCRIPTION	DATE	BY	APPD.
A					



	DONZI MARINE CORP. 7000 Bradenton Road, P.O. Box 987 Tallahassee, Florida 34270-0987	
	SCALE: 1"=1'-0" DATE: 4/11/89	PLAN & PROFILE / HALF PLAN-CUTAWAY / STATIONS # 18 CLASSIC
	DRAWN BY: J.M. Mosher	DRAWING NO. 18C-1001
	APPD. BY:	